

Instructions for use

Fallnet® SR Rail

Your rooftop protects buildings, installations and your values. In order for the roof to function properly for a long time, it must be correctly installed, maintained and serviced regularly. Therefore it must be guaranteed that it is safe to work on the roof. Both the builder and the later owners of the property are responsible for complying with all regulations regarding safety at work on the roof.

Used in conjunction with a superimposed load from a suitable bulk material (e.g. substrate or gravel), the Fallnet® SR Rail stands as a fixing device, in accordance with EN 795, to form a safety device on flat roofs up to 5 degrees.

A fixing point (the so-called runner) may only be used by one person (up to 100 kg) at a time and this person should be wearing personal protective equipment (PPE, e.g. ZinCo-PPE-Set) in accordance with EN 363. The safety harness, in accordance with EN 361, can only be used in conjunction with tested and approved components.

Fallnet SR Rail – System Components, see Module Overview

I. Documents, included in the delivery of each order:

- Installation and User Instructions
- Control Card
- In relevant cases a map, if ZinCo GmbH is in charge of the planning

II. Area of Application

The Fallnet® SR Rail may only be used for its intended purpose as a fixing device for personal protection. Changes and adaptations to the system components may not be undertaken without written consent from the manufacturer.

Furthermore, the Fallnet® SR Rail:

- Can only be used as a fixing device by 1 person (max. 100 kg, including equipment). Additional people (max. 100 kg, including equipment) can use the rail system if they have an additional fixing point (runner), so long as it has been guaranteed that at least one field (between two rail supports) is kept free between them.
- Can be used for all roofs with a pitch in the direction of the gutter/drop edge that is up to 5°.
- Can only be laid on suitable substrate, i.e. either on a system filter (multi-layer construction) or on a protective mat, > 300 g/m² (single-layer construction), see installation instructions. Important: There must be direct contact with the superimposed load (bulk material) at all times!
- The minimum distance from the floor (fall height) must be large enough so that in the case of a fall there is no collision and free movement is ensured. The necessary minimum distance from the ground (potential crash site) results from the section of the cable that is pulled over the edge of the building (= largest possible rope length from the edge – shortest rope length, perpendicular to the edge of the building), the distance for the rope and harness extension, the length of an opening shock absorber and 1.0 m safety gap.

- Is only to be used with suitable personal protective equipment appropriate for horizontal use. This personal protective equipment must be in accordance with EN 363 (not part of the Fallnet® equipment) and must include the following components:
 - Harness in accordance with EN 361
 - Shock absorber in accordance with EN 355 or an height safety device in accordance with EN 360
 - Lanyard in accordance with EN 354
 - Connection tools (karabiners) in accordance with EN 362

Make sure that the individual system components fit together and that they are suitable for use horizontally and for a fall over the edge. Potential dangers from combining used components (especially shock absorber, EN 355 and height safety device, EN 360) are to be ruled out.

Before using the personal protective equipment, we recommend you seek advice from the safety gear manufacturers. Please consult the manufacturer's instructions for use.

Instructions for use

Fallnet® SR Rail

III. Pre-requisites concerning the Use and the User of Fallnet® SR Rail

The Fallnet® SR Rail fixing device can only be used by those who have been trained how to use it safely and who have the correct know-how. The user must also make sure that he carries out the following visual and manual inspections of the stop device before each use:

- Manual tensile load and visual inspection of all visible parts of the rail
- Visual inspection of the height of the superimposed load

Evidence of a malfunction of the stop device may include:

- Deformed, weakened or dirty rails, or rails in a lesser condition than they originally were
- Fixing point (runner) easily slips or comes off the rails
- Irregular dumping height, e.g. as a result of wind drifting
- The black grid elements are visible

In the case of doubts regarding the sound condition or the safe usage of the device, the builder/owner must be informed immediately. Further use is prohibited until a review has taken place.

Every fixing point (runner) should be labelled and visible on the fixing loop. Karabiners of a PPE can only be attached to this fixing loop.

The fixing points should be used in consultation with the usage map. If there is no usage map available, then the length of the personal protective equipment's rope should be enough to ensure that a possible fall is ruled out or that, in the case of a fall, no crash will result.

If required, a check regarding the functionality of the safety devices must be authorised by the builder, in addition to the regular annual inspections. After 10 years, the manufacturer must undertake a full inspection of the Fallnet® SR Rail system. The inspection may only be carried out by a professional and must be documented on the control card.

Note:

In the case of a fall, the Fallnet® SR Rail safety device must not be used until it has been checked by a professional, repaired and declared safe to use. The Fallnet® SR Rail can only be used for the purposes described.

The manufacturer holds liability for the product in accordance with legal regulations. The manufacturer is not liable in cases where the device is used for purposes other than those for which it was intended. The manufacturer also holds no liability in cases where the installation instructions or instructions for use were not followed correctly. We expressly advise that ZinCo will, irrespective of the product liability, only take consultancy liability in cases where the installation has been undertaken in accordance with our design. Any installations undertaken without ZinCo planning are done at the installer's own risk.

IV. Information Regarding the Manufacturer and the Testing Institution

Manufacturer:

ZinCo GmbH
Lise-Meitner-Strasse 2
72622 Nuertingen, Germany
Phone +49 7022 6003-0
info@zinco-greenroof.com
www.zinco-greenroof.com

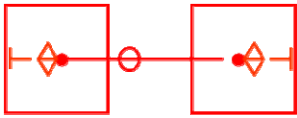
Testing Institution:

TÜV Rheinland Product Safety GmbH
Am Grauen Stein



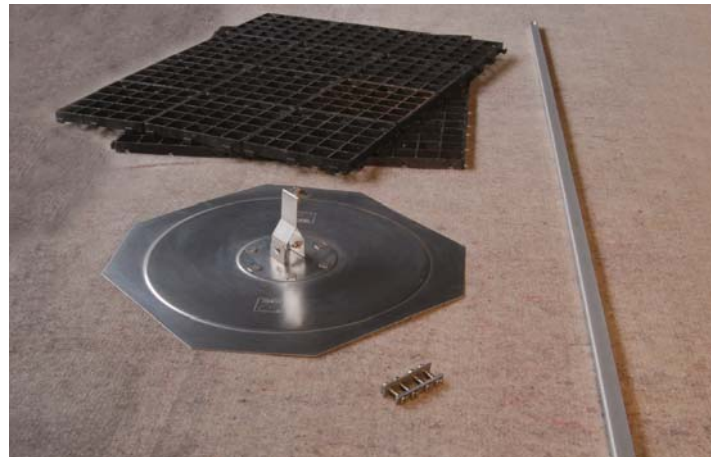
Instructions for use Fallnet® SR Rail

Base Unit 3 *
Order No. 9060



- Consisting of:
- 1 start- and 1 stop grid element, each 2,00 x 2,00 m
 - 1 rail, length 3 m
 - 1 start- and stop rail support
 - 2 stoppers
 - 2 connectors
 - 1 runner

Extension Unit 3 *
Order No. 9061



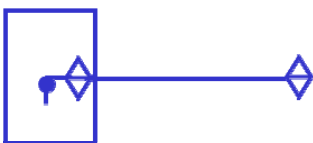
- Consisting of:
- 1 middle grid element, 1,33 x 2,00 m
 - 1 rail, length 3 m
 - 1 rail support
 - 2 connectors

Extension Unit 2 *
Order No. 9062



Similar to Extension Unit 3, but with rail length 2 m.

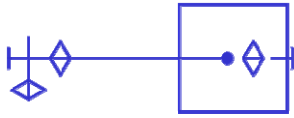
Corner Unit 3 *
Order No. 9063



- Consisting of:
- 1 middle grid element, 1,33 x 2,00 m
 - 1 rail, length 3 m
 - 1 rail support
 - 2 connectors
 - 1 corner 90°

Instructions for use Fallnet® SR Rail

T-Unit 3 *
Order No. 9064



Consisting of:

- 1 stop grid element,
2,00 x 2,00 m
- 1 rail, length 3 m
- 1 rail support
- 1 stopper
- 3 connectors
- 1 three-way junction unit

* Fitting pieces up to 3 m length are available for these units upon request. Please provide an exact measurement when ordering.

